



Insurance
DRP
NETWORK
Program

Collision Shop
SOLUTIONS



12-Page
“Photographic Portfolio”

Sample



Powerful Marketing Tool:

- *Insurance DRP Application Portfolio*
- *Showcase & Marketing Campaigns*



I-CAR
GOLD
CLASS
PROFESSIONALS™

CARFIX
Collision Experts



Application for DRP Program

Serving The Community For Over 21 years

CONTACT:
Christine Venter
28225 Live Oak Canyon Rd
Redlands, CA 92373
Phone: 909-798-1136
Cell: 951-323-0766
e-Mail: Christine@DRPnetworkProgram.com

Integrity & Quality
Redlands
San Bernardino - County
California
92373



Gold Class I.D. #: 1764A

Letter of Application for "DIRECT REPAIR PROGRAM"

We at "CARFIX Collision Experts" are very interested and would be proud to represent your organization as an active Collision Repair Facility on your "Direct Referral Program" in California. "CARFIX Collision Experts" is located at **28225 Live Oak Canyon Road, Redlands, CA 92373** and is managed and operated by Wally and Christine Venter.

What sets us apart from our competitors is not only our focus and dedication on "Customer Service", "Quality Repairs" and "Impressive Repair Cycle Times" but also our years of experience, devotion and contribution to the current "Direct Referral Programs" that we represent. I am confident that the service we are able to provide to your organization will exceed both yours and your "Policy Holders" expectations.

For prompt response from our organization, please feel free to contact me personally at 951-323-0766 or you may contact my personal Marketing Representative directly, Christine Venter at 909-798-1136 who will be happy to provide you with any further additional documents, licenses or information you may need to assist you in your pre-evaluation process of our store. More importantly, I look forward to and would be delighted to give you a personal tour of our Collision Repair Facility.

Store Location	
County:	Riverside
City Location:	Lake Elsinore
ZIP Codes:	92530-92532
Service Area	Zip
Canyon Lake	92587
Corona	92877-92883
Lake Elsinore	92530-92532
Menifee	92584-92587, 92596
Murrieta	92562-92564
Perris	92570-92572, 92599
Quail Valley	92587
Sun City	92584-92586
Temecula	92589-92593
Wildomar	92595
Winchester	92596

I look forward to hearing from you in the very near future in hopes that we may establish a joint venture in allowing us to provide your Policy Holders with the outstanding "Services" and "Integrity" that has formed the renowned reputation and foundation of your organization.

Sincerely,

Wally Venter - President
 Christine Venter - Director of Marketing Operations
 CARFIX Collision Experts



Recognized by American Honda Motor Co., Inc.



CARFIX

Collision Experts

Store Location & Service Area

Geographic Location in So. California



Nearest Freeway Off Ramps



"Service Area"





CARFIX

Collision Experts

DRP Application "Data Sheet"

- Rates
- Available Services
- Tools & Equipment

BAR License #
ARD00001A00

Business License
A0003AAB

Fed. Tax ID:
98-14961AA

REPAIR CAPACITY

\$480,000.00	Maximum "Potential" Repair Capacity in \$ / month
51%	"Current" Repair Volume (% of Max. Potential Capacity)
192	Potential # of Additional Vehicles/Mo. @ \$2,500/Repair

HOURS OF OPERATION

Mon to Fri: **7:30 AM** to **6:00 PM**
Saturdays: **8:30 AM** to **2:00 PM**

REPAIR RATES (Prevailing Area Rates)

Negotiable	\$46.00 /hr	Body Labor
	\$46.00 /hr	Paint Labor
	\$75.00 /hr	Frame Labor
	\$95.00 /hr	Mechanical Labor
	\$95.00 /hr	Electrical Labor
	\$34.00 /hr	Paint Materials
	\$55.00 /Day	Storage
	Cost + 25%	Sublet Labor
Cost + 25%	LKQ/Used Parts	

FACILITY REPAIR SERVICES OFFERED

- * Body Work Repairs
- * Uni-Body Repairs
- * Frame & Structural Repairs
- * Frame Change Over
- * Paint Refinishing
- * Paintless Dent Repair
- * Fiberglass & Plastic Repairs
- * Glass Replacement/Removal
- * Aluminum Repairs (Body Panels)
- * Mechanical Repairs:
 - Suspension Repairs
 - Brakes
 - R&I Engine/Axles
 - A.C. Evac/Recharge
 - Airbags
 - Electrical
 - Wheel Alignments



CUSTOMER SERVICE

- * Courtesy Vehicle
- Customer Transport to/from Home or Work
- * Rental Car Arrangements
- * Estimating Service
- * Claims Processing
- * 24hr Tow Service
- * Vehicle Pick-Up & Delivery

ESTIMATING SYSTEM & SERVICES

Estimating System

- * CCC - ONE
- * Mitchell - Ultramate (With Photo Imaging)

Estimating Services

- * 4 - Work Stations For Visiting Adjusters
- * 6 - Estimator Work Stations
- * 12 - Customer Waiting Area
- * 5 - Hydraulic Hoist For Estimating

REPAIR WARRANTY

- * Lifetime Warranty On Collision Repairs
- * Lifetime Warranty On Refinishing
- * Factory Warranty On Parts

INSURANCE: Garage & Liability Coverage

- * Insurance Carrier: **Zurich**
- * Garage Coverage: **\$300,000.00**
- * Legal Liability: **\$3,000,000.00**

SECURITY

- * Security Camers/Fenced Lot

REPAIR AFFILIATIONS

Direct Repair Program (DRP) Relationships

- * AAA
- * Allstate
- * Mercury

New Car "Dealership" Affiliations

- * South Bay Toyota
- * South Bay Scion
- * Gardena Nissan
- * Gardena Honda

SPECIALTY REPAIR SERVICES PROVIDED

- * Heavy Duty Trucks & R.V. Repairs & Paint
- * Vehicle Full Service & Tune Up

EQUIPMENT

- * 6 - Paint Booth system
- Spray Bake (1) Spray Line (4) Spray Zone (1)
- Paint Used & Mixing system
- PPG
- * 12 - Frame Machines:
- Chief Ez Liner (4) CAR-O-LINER (1) Cheetah (7)
- Measuring System:
- * 2 - Black Hawk-Quick Chek (1) Genesis (1)

TOOLS

- * 2 - 110 MIG Welders:
- * 8 - 220 MIG Welders:
- * 4 - Compression/Spot Welders: (CAR-O-LINER)
- * 14 - Dent Pullers
- * 2 - Engine "Picker" Cranes 3-Ton
- * 2 - Suspension "Coil Spring" / "Strut" Compressors
- * 5 - Solid State Battery Chargers
- * 11 - "GO-Jacks" (To move disabled vehicles)
- * 15 - Floor Jacks
- * 3 - A/C Evac & Recharge Systems
- * 16 - Vehicle Stands
- * 5 - Oxygen / Gas Welder & Cutting Torches
- * 2 - "Hunter" - Wheel Alignment Machines
- * 3 - "Hunter" - Wheel Mount & Balance Machines

I-CAR Training

- * I-CAR GOLD - Certified Repair Facility

Gold Class I.D. #: 1764A





CARFIX

Collision Experts

DRP Application "Data Sheet"

- Sq. Footage
- # of Repair Bays
- Parking Storage

Repair Area

BODY - MECHANICAL - FRAME Shops:

	Sq. Ft.	# of Bays
BODY SHOP: Repair Area	7,508	47
FRAME SHOP: Repair Area	2,490	11
MECHANICAL: Repair Area	828	4
DETAIL: Detail Area	1,364	0

TOTAL: "REPAIR" AREA **12,190** **49** (Body Shop)

PAINT DEPARTMENT:

	Sq. Ft.	# of Bays
Paint Prep & Mask Area	4,690	45
Paint Mixing Area	0	0
Paint Booth #1 - Spray Bake	570	1
Paint Booth #2 - 3 - 4 - 5 Spray Line	1,188	4
Paint Booth #6 - Spray Zone	720	1

TOTAL "REFINISH" AREA **7,168** **50** (Paint Shop)

TOTAL: REPAIR AREA	19,358	Sq. Feet
	99	Repair Bays

Vehicle "Supplement Inspection" & "Tear Down" Area	5,000	Sq. Feet
	40	Inspection Bays

Office & Estimating Area

OFFICE BUILDING:

	Sq. Ft.	Number	
Customer Lobby Area	500	12	Seats
Estimator Office - Shop #1	200	6	Stations
Insurance Adjusters	182	4	Stations
Estimator Office - Shop #2	1,020	2	Stations
★ Office Space Available to Ins.	1,020	2	Rooms

TOTAL "OFFICE & ESTIMATING" AREA **2,922**

TOTAL "OFFICE" AREA	2,922	Sq. Ft.
----------------------------	--------------	----------------

Parking & Secure Vehicle Storage Area

OVERNIGHT SECURE PARKING & STORAGE

	Sq. Ft.	# of Bays
Overnight Secure Vehicle Storage (Outside Yard)	13,308	160
Overnight Secure Vehicle Storage (Inside Shop)	24,358	155

TOTAL "SECURE VEHICLE STORAGE" AREA **37,666** **315** Vehicles

DAILY USE - PARKING

	Sq. Ft.	# of Bays
Customer Daily Parking	4,500	30

TOTAL "DAILY CUSTOMER PARKING" AREA **4,500** **30** Vehicles

TOTAL : PARKING & STORAGE (On Facility)	37,666	Sq. Feet
--	---------------	-----------------

Total Usable "PROPERTY" Area		
FACILITY - USABLE FLOOR AREA	40,088	Sq. Feet



Insurance
DRP
NETWORK
Program

CARFIX

Collision Experts

WARRANTY & Specialty Services



I-CAR
GOLD CLASS
PROFESSIONALS™
Gold Class I.D. #: 18463



We autograph each repair with quality workmanship



Specialty Services



PAINT

We are able to Paint "OVER-SIZED" Vehicles such as R.V.'s, Vans and Trucks.



CERTIFIED Full-Time MECHANICS

MECHANICAL

All Mechanical Repairs and Alignments are done In-House.



CARFIX

Collision Experts

“CUSTOMER SERVICE” Lobby Area & Services



We provide our customers with convenient parking and easy access to our comfortable front office.



“Leave the insurance details with our friendly staff...and relax while we process your “Insurance Claim”.



enterprise
rent-a-car

We'll pick you up.™

Car Rental Service At Location
800 rent-a-car



We will arrange all your transportation needs.

We perform a thorough “Damage Inspection”



CARFIX

Collision Experts

“BODY SHOP” Sheet Metal Repairs



Body Shop: (Total of 23 - Repair Bays)

Our Spacious Facility caters to (47) Repair Bays in the Body Shop along with (10) Tear-Down Bays.



Body Shop # 2a
(8 - Repair Bays)



Body Shop # 2b
(8 - Repair Bays)



Body Shop # 3
(5 - Repair Bays)



Body Shop # 4
(9 - Repair Bays)



Our “I-CAR” **CERTIFIED** technicians take pride in providing quality repairs to our customer’s vehicles.



Secure Parking Storage Area



CARFIX

Collision Experts

FRAME & MECHANICAL SHOP

Chassis / Unibody & Mechanical Repairs

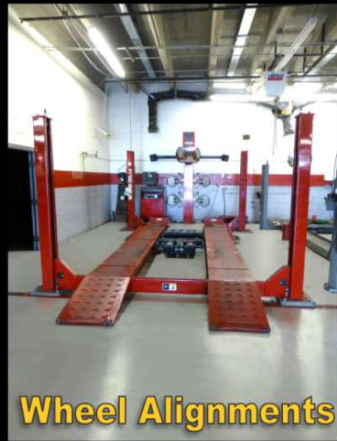
STRUCTURAL & FRAME SHOP I-CAR GOLD CLASS



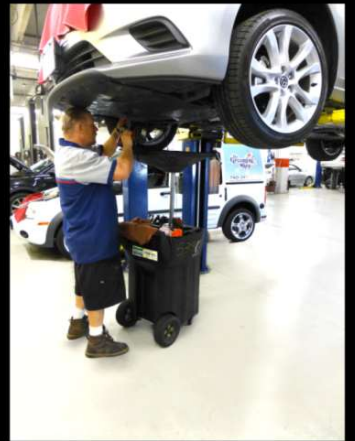
Structural Repairs



Using "State-Of-The-Art" Computerized Technology, we are able to perform all structural and frame repairs.



Wheel Alignments



MECHANICAL SHOP MASTER ASE Technicians



(Over 51 - Repair Bays)



Several Mechanical Repair Shops



Our ASE Certified Mechanics are able to perform major mechanical repairs to all vehicles.



CARFIX

Collision Experts

“PAINT SHOP”



Large Fully Equipped Paint Department
(35 - Prep, Prime & Paint - Work Bays)

Our “Fully Equipped” Paint Shop allows us to perform high quality finishes backed with a “Lifetime Warranty”.



Enclosed Primer Station



2 - Down-Draft Prime/Jamb/Paint Booths

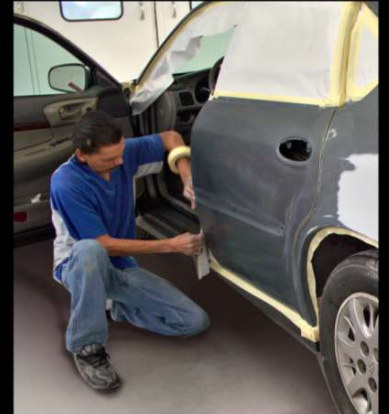


2 - Spray & Bake Paint Booths

Fully equipped with:- 1-Enclosed Primer Station, 2-Down Draft Jamb / Paint Booths and 3-Spray & Bake Booths.



Truck / RV Paint Booth



Our dedicated Paint Mixing room with computerized paint mixing system ensures Factory Standard color matching.



All vehicles are buffed and detailed prior to assembly and undergo a “Quality Inspection” prior to delivery.

CARFIX

Collision Experts

Tools & Equipment



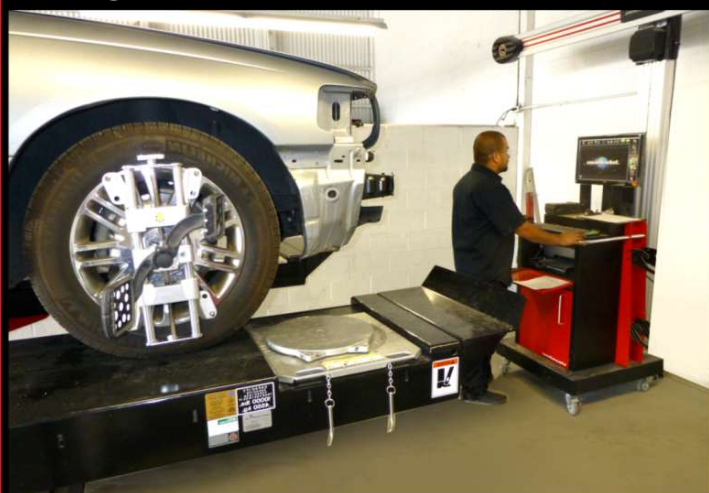
Gas welders and cutting torches



110v & 220v MIG welders



Compression Spot Welders



"Computerized" Wheel Alignments



"Computerized" Frame Measuring System



Wheel & Tire shop



"Spring" & "Strut" Compressor



Deep Cycle Battery chargers



AC Evac. & Recharge Systems

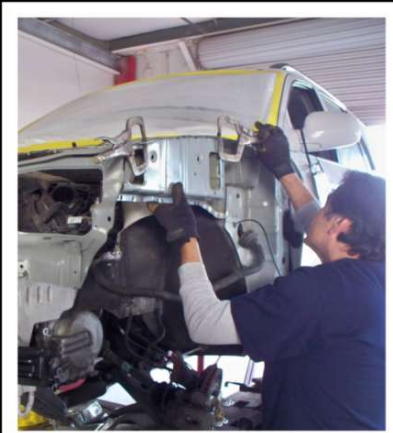
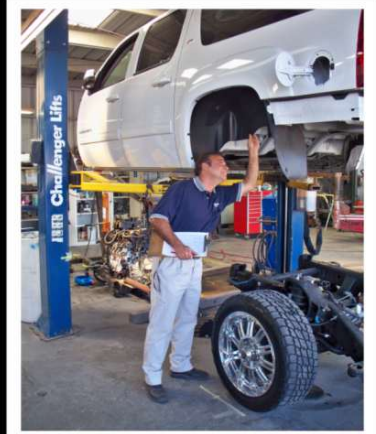


CARFIX
Collision Experts

I-CAR
GOLD CLASS
PROFESSIONALS™



Total
Customer
Satisfaction



Collision Shop
SOLUTIONS

This store has been personally inspected by "Collision Shop Solutions" and has qualified as a "PREMIER Body Shop". Qualifying "Premier Body Shops" are inspected to ensure they are fully tooled to perform repairs to I-CAR standards and are staffed with trained and experienced technicians, managers and estimators.

Note: "We Pick Shops for the DRP NETWORK Program - Shops Don't Pick Us"

Insurance
DRP
NETWORK
Program

Contact: Christine Venter
Phone: (909) 798-1136



Benefits of your

"12-Page Photographic Portfolio"

Insurance DRP Application Portfolio

Join our "DRP Network Marketing Program" and let us market your store to the Insurance DRP Providers. Your "DRP Application Portfolio" is included in the Program costs.

Showcase & Marketing Campaigns

Market and Showcase your own store. We will drive over to your store to collect all the pertinent information needed for your DRP Application documents and take photos of your store. Price includes all graphic Artwork & Printing costs.



Call Us Today! (909) 798-1136



Christine@DRPnetworkProgram.com

